

Technical Data Sheet

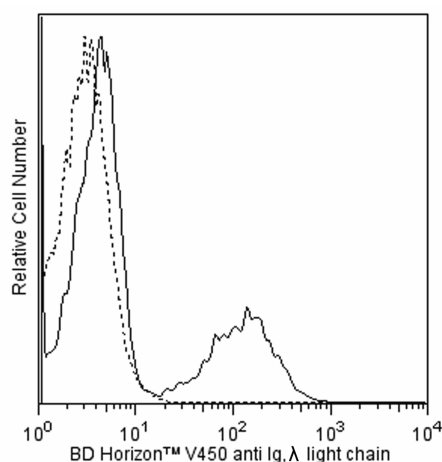
V450 Mouse Anti-Human Light Chain, λ **Product Information**

Material Number:	561379
Alternate Name:	Ig λ ; IGL@; IGL; Immunoglobulin lambda locus
Size:	50 tests
Vol. per Test:	5 μ l
Clone:	JDC-12
Isotype:	Mouse IgG1, κ
Reactivity:	QC Testing: Human
Workshop:	NA
Storage Buffer:	Aqueous buffered solution containing protein stabilizer and $\leq 0.09\%$ sodium azide.

Description

The JDC-12 monoclonal antibody specifically binds to human immunoglobulin light chain, lambda (λ). It does not bind to immunoglobulin κ light chains or heavy chains.

The antibody is conjugated to BD Horizon™ V450, which has been developed for use in multicolor flow cytometry experiments and is available exclusively from BD Biosciences. It is excited by the Violet laser Ex max of 406 nm and has an Em Max at 450 nm. Conjugates with BD Horizon™ V450 can be used in place of Pacific Blue™ conjugates.



Flow cytometric analysis of Ig, λ light chain expression on human peripheral blood lymphocytes. Human peripheral blood mononuclear cells were incubated in complete tissue culture medium overnight in order to minimize subsequent nonspecific immunofluorescent staining. The cells were harvested and stained with APC-H7 Anti-Human CD19 antibody (Cat. No. 560727) and with either BD Horizon™ V450 Mouse IgG1, κ Isotype Control (Cat. No. 560373; dashed line histogram) or BD Horizon™ V450 Mouse anti-Human Ig, λ light chain antibody (Cat. No. 561379; solid line histogram). The fluorescence histograms were derived from CD19+ gated events with the forward- and side-light scattering characteristics of viable lymphocytes. Flow cytometry was performed using a BD™ LSR II Flow Cytometer System.

Preparation and Storage

The monoclonal antibody was purified from tissue culture supernatant or ascites by affinity chromatography.

The antibody was conjugated with BD Horizon™ V450 under optimum conditions, and unreacted BD Horizon™ V450 was removed.

Store undiluted at 4°C and protected from prolonged exposure to light. Do not freeze.

Application Notes**Application**

Flow cytometry	Routinely Tested
----------------	------------------

BD Biosciences

bdbiosciences.com

United States	Canada	Europe	Japan	Asia Pacific	Latin America/Caribbean
877.232.8995	888.268.5430	32.53.720.550	0120.8555.90	65.6861.0633	0800.771.7157

For country-specific contact information, visit bdbiosciences.com/how_to_order/

Conditions: The information disclosed herein is not to be construed as a recommendation to use the above product in violation of any patents. BD Biosciences will not be held responsible for patent infringement or other violations that may occur with the use of our products. Purchase does not include or carry any right to resell or transfer this product either as a stand-alone product or as a component of another product. Any use of this product other than the permitted use without the express written authorization of Becton Dickinson and Company is strictly prohibited.

For Research Use Only. Not for use in diagnostic or therapeutic procedures. Not for resale.

BD, BD Logo and all other trademarks are the property of Becton, Dickinson and Company. ©2011 BD



Suggested Companion Products

Catalog Number	Name	Size	Clone
560373	V450 Mouse IgG1, κ Isotype Control	0.1 mg	MOPC-21
554656	Stain Buffer (FBS)	500 ml	(none)
560727	APC-H7 Mouse Anti-Human CD19	50 tests	HIB19

Product Notices

1. This reagent has been pre-diluted for use at the recommended Volume per Test. We typically use 1×10^6 cells in a 100- μ l experimental sample (a test).
2. An isotype control should be used at the same concentration as the antibody of interest.
3. Please refer to www.bdbiosciences.com/pharming/en/protocols for technical protocols.
4. Caution: Sodium azide yields highly toxic hydrazoic acid under acidic conditions. Dilute azide compounds in running water before discarding to avoid accumulation of potentially explosive deposits in plumbing.
5. For fluorochrome spectra and suitable instrument settings, please refer to our Fluorochrome Web Page at www.bdbiosciences.com/colors.
6. BD Horizon™ V450 has a maximum absorption of 406 nm and maximum emission of 450 nm. Before staining with this reagent, please confirm that your flow cytometer is capable of exciting the fluorochrome and discriminating the resulting fluorescence.
7. Pacific Blue™ is a trademark of Molecular Probes, Inc., Eugene, OR.

References

Odendahl M, Jacobi A, Hansen A, et al. Disturbed peripheral B lymphocyte homeostasis in systemic lupus erythematosus. *J Immunol.* 2000; 165(10):5970-5979. (Clone-specific: Flow cytometry)