

CYLD (D6050) Rabbit mAb



✓ 100 µl
(10 western blots)

Orders ■ 877-616-CELL (2355)
orders@cellsignal.com
Support ■ 877-678-TECH (8324)
info@cellsignal.com
Web ■ www.cellsignal.com

New 05/13

For Research Use Only. Not For Use In Diagnostic Procedures.

Entrez-Gene ID #1540
Swiss-Prot Acc. #Q9NQC7

Applications W Endogenous	Species Cross-Reactivity* H, M, R, Mk, Hm	Molecular Wt. 109 kDa	Isotype Rabbit IgG**
---------------------------------	--	--------------------------	-------------------------

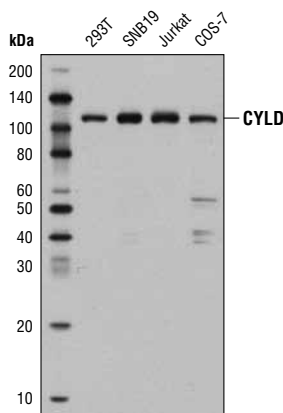
Background: CYLD is a cytoplasmic deubiquitinating enzyme encoded by a tumor suppressor gene altered in individuals diagnosed with cylindromatosis, a genetic condition characterized by benign tumors of skin appendages (1,2). Functional CYLD deubiquitinase regulates inflammation and cell proliferation by down regulating NF-κB signaling through removal of ubiquitin chains from several NF-κB pathway proteins (3,4). CYLD is a negative regulator of proximal events in Wnt/β-catenin signaling and is a critical regulator of natural killer T cell development (5,6). The transcription factor Snail can inhibit CYLD expression, resulting in melanoma cell proliferation (7).

Specificity/Sensitivity: CYLD (D6050) Rabbit mAb recognizes endogenous levels of total CYLD protein.

Source/Purification: Monoclonal antibody is produced by immunizing animals with recombinant human CYLD protein.

Background References:

- (1) Biggs, P.J. et al. (1995) *Nat Genet* 11, 441-3.
- (2) Sun, S.C. (2010) *Cell Death Differ* 17, 25-34.
- (3) Regamey, A. et al. (2003) *J Exp Med* 198, 1959-64.
- (4) Glittenberg, M. and Ligoxygakis, P. (2007) *Fly (Austin)* 1, 330-2.
- (5) Tauriello, D.V. et al. (2010) *Mol Cell* 37, 607-19.
- (6) Lee, A.J. et al. (2010) *EMBO J* 29, 1600-12.
- (7) Massoumi, R. et al. (2009) *J Exp Med* 206, 221-32.



Western blot analysis of extracts from various cell lines using CYLD (D6050) Rabbit mAb.

Storage: Supplied in 10 mM sodium HEPES (pH 7.5), 150 mM NaCl, 100 µg/ml BSA, 50% glycerol and less than 0.02% sodium azide. Store at -20°C. Do not aliquot the antibody.

***Species cross-reactivity is determined by western blot.**

****Anti-rabbit secondary antibodies must be used to detect this antibody.**

Recommended Antibody Dilutions:

Western blotting 1:1000

For product specific protocols please see the web page for this product at www.cellsignal.com.

Please visit www.cellsignal.com for a complete listing of recommended complementary products.

IMPORTANT: For western blots, incubate membrane with diluted antibody in 5% w/v BSA, 1X TBS, 0.1% Tween-20 at 4°C with gentle shaking, overnight.

Applications Key: W—Western IP—Immunoprecipitation IHC—Immunohistochemistry ChIP—Chromatin Immunoprecipitation IF—Immunofluorescence F—Flow cytometry E-P—ELISA-Peptide
Species Cross-Reactivity Key: H—human M—mouse R—rat Hm—hamster Mk—monkey Mi—mink C—chicken Dm—D. melanogaster X—Xenopus Z—zebrafish B—bovine
Dg—dog Pg—pig Sc—S. cerevisiae Ce—C. elegans Hr—horse All—all species expected Species enclosed in parentheses are predicted to react based on 100% homology.