

## ELAVL1/HuR (D9W7E) Rabbit mAb

✓ 100 µl  
(10 western blots)

**Orders** ■ 877-616-CELL (2355)  
orders@cellsignal.com

**Support** ■ 877-678-TECH (8324)  
info@cellsignal.com

**Web** ■ www.cellsignal.com

rev. 01/05/15

**For Research Use Only. Not For Use In Diagnostic Procedures.**

**Applications**  
W, IP, IF-IC  
Endogenous

**Species Cross-Reactivity\***  
H, M, R, Mk

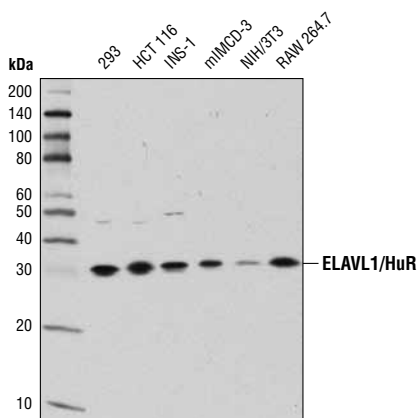
**Molecular Wt.**  
30 kDa

**Isotype**  
Rabbit IgG\*\*

**Background:** The ELAVL (embryonic lethal, abnormal vision and *Drosophila*-like) family of proteins includes ELAVL1/HuR, ELAVL2/HuB, ELAVL3/HuC and ELAVL4/HuD (1). ELAVL1/HuR is ubiquitously expressed whereas expression of the other three members is neuronal-specific (1). ELAVL/Hu proteins are highly conserved RNA-binding proteins (1). Besides three RNA recognition motifs, these proteins also contain nuclear localization signals that enable them to shuttle between nucleus and cytoplasm (2). Upon inhibition of transcription by actinomycin D, ELAVL1/HuR relocates from nucleus to cytoplasm where it binds the AU-rich elements within 3' UTRs to stabilize mRNAs (3, 4). ELAVL1/HuR is suggested to increase translation by binding to mRNAs (5,6). In addition, ELAVL1/HuR interacts with microRNAs (miRNAs) (7).

**Specificity/Sensitivity:** ELAVL1/HuR (D9W7E) Rabbit mAb recognizes endogenous levels of total ELAVL1/HuR protein.

**Source/Purification:** Monoclonal antibody is produced by immunizing animals with a synthetic peptide corresponding to residues surrounding His201 of human ELAVL1/HuR protein.



Western blot analysis of extracts from various cell lines using ELAVL1/HuR (D9W7E) Rabbit mAb.

Entrez-Gene ID #1994  
UniProt ID #Q15717

**Storage:** Supplied in 10 mM sodium HEPES (pH 7.5), 150 mM NaCl, 100 µg/ml BSA, 50% glycerol and less than 0.02% sodium azide. Store at -20°C. Do not aliquot the antibody.

**\*Species cross-reactivity is determined by western blot.**

**\*\*Anti-rabbit secondary antibodies must be used to detect this antibody.**

**Recommended Antibody Dilutions:**

Western blotting	1:1000
Immunoprecipitation	1:50
Immunofluorescence (IF-IC)	1:100

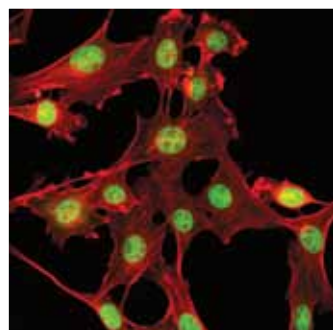
**For product specific protocols please see the web page for this product at [www.cellsignal.com](http://www.cellsignal.com).**

**Please visit [www.cellsignal.com](http://www.cellsignal.com) for a complete listing of recommended companion products.**

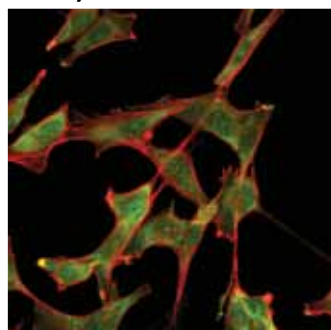
**Background References:**

- (1) Izquierdo, J.M. (2008) *J Biol Chem* 283, 19077-84.
- (2) Fan, X.C. and Steitz, J.A. (1998) *Proc Natl Acad Sci U S A* 95, 15293-8.
- (3) Peng, S.S. et al. (1998) *EMBO J* 17, 3461-70.
- (4) Brennan, C.M. and Steitz, J.A. (2001) *Cell Mol Life Sci* 58, 266-77.
- (5) Mazan-Mamczarz, K. et al. (2003) *Proc Natl Acad Sci U S A* 100, 8354-9.
- (6) Lal, A. et al. (2005) *EMBO J* 24, 1852-62.
- (7) Lebedeva, S. et al. (2011) *Mol Cell* 43, 340-52.

Untreated



Actinomycin D-treated



Confocal immunofluorescent analysis of NIH/3T3 cells, untreated (left) or actinomycin D-treated (5 µg/ml, 2 hr; right) using ELAVL1/HuR (D9W7E) Rabbit mAb (green). Actin filaments were labeled with DyLight™ 554 Phalloidin #13054 (red).

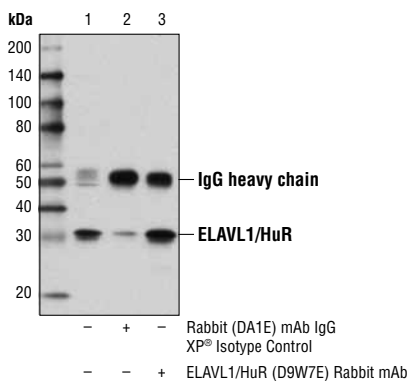
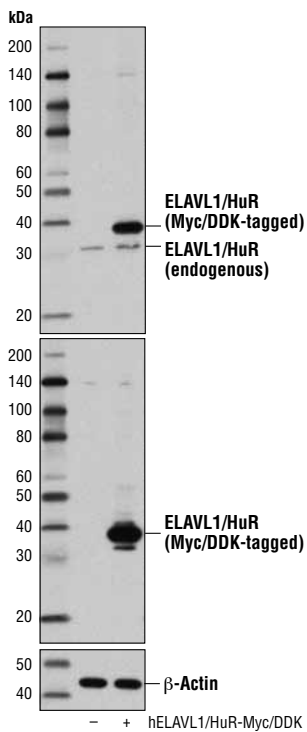
**IMPORTANT:** For western blots, incubate membrane with diluted antibody in 5% w/v nonfat dry milk, 1X TBS, 0.1% Tween®20 at 4°C with gentle shaking, overnight.

**Applications Key:** W—Western IP—Immunoprecipitation IHC—Immunohistochemistry ChIP—Chromatin Immunoprecipitation IF—Immunofluorescence F—Flow cytometry E-P—ELISA-Peptide

**Species Cross-Reactivity Key:** H—human M—mouse R—rat Hm—hamster Mk—monkey Mi—mink C—chicken Dm—D. melanogaster X—Xenopus Z—zebrafish B—bovine

Dg—dog Pg—pig Sc—S. cerevisiae Ce—C. elegans Hr—horse All—all species expected Species enclosed in parentheses are predicted to react based on 100% homology.

DyLight is a trademark of Thermo Fisher Scientific Inc. and its subsidiaries.  
Tween is a registered trademark of ICI Americas, Inc.



Immunoprecipitation of ELAVL1/HuR from 293 cell extracts using Rabbit (DA1E) mAb IgG XP® Isotype Control #3900 (lane 2) or ELAVL1/HuR (D9W7E) Rabbit mAb (lane 3). Lane 1 is 10% input. Western blot analysis was performed using ELAVL1/HuR (D9W7E) Rabbit mAb.

Western blot analysis of extracts from 293 cells, mock transfected (-) or transfected with a construct expressing Myc/DDK-tagged full-length human ELAVL1/HuR (hELAVL1/HuR-Myc/DDK; +), using ELAVL1/HuR (D9W7E) Rabbit mAb (upper), DYKDDDDK Tag (9A3) Mouse mAb #8146 (middle), or β-Actin (D6A8) Rabbit mAb #8457 (lower).