

Product Data Sheet

PE anti-human IL-10

Catalog # / Size: 506804 / 100 tests

Clone: JES3-19F1

Isotype: Rat IgG2a, κ

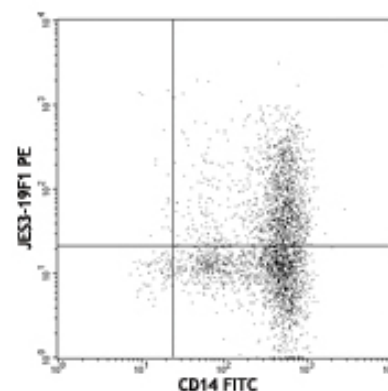
Immunogen: COS-expressed recombinant human IL-10

Reactivity: Human

Preparation: The antibody was purified by affinity chromatography, and conjugated with PE under optimal conditions. The solution is free of unconjugated PE and unconjugated antibody.

Formulation: Phosphate-buffered solution, pH 7.2, containing 0.09% sodium azide and 0.2% (w/v) BSA (origin USA).

Storage: The antibody solution should be stored undiluted at 4°C and protected from prolonged exposure to light. **Do not freeze.**



LPS-stimulated human peripheral blood monocytes were surface stained with CD14 FITC and then intracellularly stained with JES3-19F1 PE

Applications:

Applications: ICFC - Quality tested

Recommended Usage: Each lot of this antibody is quality control tested by intracellular immunofluorescent staining with flow cytometric analysis. **Test size products are transitioning from 20 μ l to 5 μ l per test.** Please check your vial or your CoA to find the suggested use of this reagent per million cells in 100 μ l staining volume or per 100 μ l of whole blood. It is recommended that the reagent be titrated for optimal performance for each application. Read more at www.biolegend.com/testsize regarding the test size change.

Application Notes: **ELISA or ELISPOT Capture¹⁻⁴:** The Purified JES3-19F1 antibody is useful as the capture antibody in a sandwich ELISA or ELISPOT assay, when used in conjunction with the biotinylated JES3-12G8 antibody (Cat. No. 501502/501503) as the detecting antibody. The LEAF™ Purified antibody is suggested for ELISPOT capture. For use as an ELISPOT capture antibody, a concentration range of 4-8 μ g/ml is recommended. **Flow Cytometry:** The fluorochrome-labeled JES3-19F1 antibody is useful for intracellular immunofluorescent staining and flow cytometric analysis to identify IL-10 -producing cells within mixed cell populations. For intracellular cytokine staining protocol, please visit www.biolegend.com and click on the support section. **Neutralization^{1,2}:** The LEAF™ Purified antibody (Endotoxin <0.1 EU/ μ g, Azide-Free, 0.2 μ m filtered) is recommended for neutralization of human IL-10 bioactivity (Cat. No. 506810). **Additional reported applications (for the relevant formats) include:** Western blotting, immunohistochemical staining^{5,6} of paraformaldehyde-fixed, saponin-treated frozen tissue sections, and immunocytochemistry. **Note:** For testing human IL-10 in serum or plasma, BioLegend's ELISA Max™ Sets (Cat. No. 430601 to 430606) are specially developed and recommended.

Application References:

1. Abrams J, *et al.* 1992. *Immunol. Rev.* 127:5.
2. Gotlieb W, *et al.* 1992. *Cytokine* 4:385.
3. Yssel H, *et al.* 1992. *J. Immunol.* 149:2378.
4. Burdin N, *et al.* 1993. *J. Exp. Med.* 177:295.
5. Andersson U, *et al.* 1999. *Detection and quantification of gene expression.* New York: Springer-Verlag.
6. Andersson J, *et al.* 1994. *Immunology* 83:16.

Description: IL-10 was originally described as Cytokine Synthesis Inhibitory Factor (CSIF) by virtue of its ability to inhibit cytokine production by Th1 clones. IL-10 shares over 80% sequence homology with the Epstein-Barr virus protein BCRF1. The biological activities of IL-10 include inhibition of macrophage-mediated cytokine synthesis, suppression of the delayed type hypersensitivity response, and stimulation of the Th2 cell response, which results in elevated antibody production. The JES3-19F1 antibody reacts with human and viral interleukin-10 (IL-10). The JES3-19F1 antibody can neutralize the bioactivity of natural or recombinant IL-10.

Antigen References:

1. Fitzgerald K, *et al.* Eds. 2001. *The Cytokine FactsBook.* Academic Press San Diego.
2. de Waal-Malefyt R, *et al.* 1992. *Curr. Opin. Immunol.* 4:314.
3. Howard M, *et al.* 1992. *Immunol. Today.* 13:198.
4. Quesniaux V. 1992. *Research Immunol.* 143:385.

Related Products:

Product
Cell Staining Buffer
Fixation Buffer
Permeabilization Wash Buffer (10X)
RBC Lysis Buffer (10X)

Clone

Application

FC, ICC, ICFC
ICC, ICFC
ICC, ICFC, IHC
FC, ICFC



For research use only. Not for diagnostic use. Not for resale. BioLegend will not be held responsible for patent infringement or other violations that may occur with the use of our products.



*These products may be covered by one or more Limited Use Label Licenses (see the BioLegend Catalog or our website, www.biolegend.com/ordering#license). BioLegend products may not be transferred to third parties, resold, modified for resale, or used to manufacture commercial products, reverse engineer functionally similar materials, or to provide a service to third parties without written approval of BioLegend. By use of these products you accept the terms and conditions of all applicable Limited Use Label Licenses. Unless otherwise indicated, these products are for research use only and are not intended for human or animal diagnostic, therapeutic or commercial use.

Brefeldin A Solution (1,000X)
Monensin Solution (1,000X)
PE Rat IgG2a, κ Isotype Ctrl

RTK2758

ICFC
ICFC
FC, ICFC



For research use only. Not for diagnostic use. Not for resale. BioLegend will not be held responsible
for patent infringement or other violations that may occur with the use of our products.



*These products may be covered by one or more Limited Use Label Licenses (see the BioLegend Catalog or our website, www.biolegend.com/ordering#license). BioLegend products may not be transferred to third parties, resold, modified for resale, or used to manufacture commercial products, reverse engineer functionally similar materials, or to provide a service to third parties without written approval of BioLegend. By use of these products you accept the terms and conditions of all applicable Limited Use Label Licenses. Unless otherwise indicated, these products are for research use only and are not intended for human or animal diagnostic, therapeutic or commercial use.

BioLegend Inc., 9727 Pacific Heights Blvd, San Diego, CA 92121 www.biolegend.com
Toll-Free Phone: 1-877-Bio-Legend (246-5343) Phone: (858) 768-5800 Fax: (877) 455-9587