

Product Data Sheet

Purified anti-IRF4

Catalog # / Size: 646402 / 100 µg

Clone: IRF4.3E4

Isotype: Rat IgG1, κ

Immunogen: GST fusion protein containing C-terminal of murine IRF4

Reactivity: Mouse, Human

Preparation: The antibody was purified by affinity chromatography.

Formulation: Phosphate-buffered solution, pH 7.2, containing 0.09% sodium azide.

Concentration: 0.5 mg/ml

Storage: The antibody solution should be stored undiluted at 4°C.

Applications:

Applications: WB - *Quality tested*
ICFC - *Reported in the literature*

Recommended Usage: Each lot of this antibody is quality control tested by Western blotting. For Western blotting, the suggested use of this reagent is 10 µg/ml. It is recommended that the reagent be titrated for optimal performance for each application.

Application References: 1. Zheng Y, *et al.* 2009. *Nature* 458:351

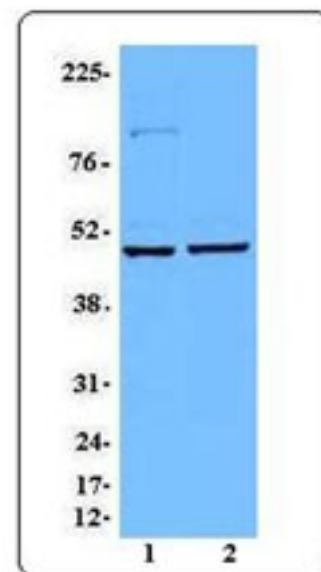
Description: The IRF family consists of at least 9 members. IRF4 and IRF8 are highly homologous to each other and also redundant in function. IRF4 is critical for Th2 and Th17 development. Together with TRF8, it plays essential role for macrophage and dendritic cell development and function. IRF4 is also reported to be essential for pre-B cell development, receptor editing, germinal center reactor and plasma cell differentiation.

Antigen References: 1. Lu R, *et al.* 2008. *Trends Immunol* 29:487

Related Products:
Product HRP Goat anti-rat IgG (minimal x-reactivity)

Clone Poly4054

Application ELISA, IF, IHC, WB



A20 (lane 1) and Raji (lane 2) cell extracts were resolved by electrophoresis, transferred to nitrocellulose and probed with anti-mouse IRF4 (Cross-reacts with human IRF4) antibody. Proteins were visualized using a goat anti-rat secondary antibody conjugated to HRP and a chemiluminescence system.



For research use only. Not for diagnostic use. Not for resale. BioLegend will not be held responsible for patent infringement or other violations that may occur with the use of our products.



*These products may be covered by one or more Limited Use Label Licenses (see the BioLegend Catalog or our website, www.biollegend.com/ordering#license). BioLegend products may not be transferred to third parties, resold, modified for resale, or used to manufacture commercial products, reverse engineer functionally similar materials, or to provide a service to third parties without written approval of BioLegend. By use of these products you accept the terms and conditions of all applicable Limited Use Label Licenses. Unless otherwise indicated, these products are for research use only and are not intended for human or animal diagnostic, therapeutic or commercial use.