

# Product Data Sheet

## Purified anti-CD247 (TCR $\zeta$ , CD3 $\zeta$ )

**Catalog # / Size:** 644101 / 25  $\mu$ g  
644102 / 100  $\mu$ g

**Clone:** 6B10.2

**Isotype:** Mouse IgG1  $\kappa$

**Immunogen:** Human TCR zeta chain aa38-54

**Reactivity:** Human

**Preparation:** The antibody was purified by affinity chromatography.

**Formulation:** Phosphate-buffered solution, pH 7.2, containing 0.09% sodium azide.

**Concentration:** 0.5 mg/ml

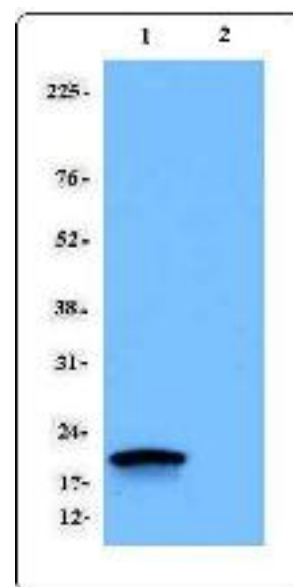
**Storage:** The antibody solution should be stored undiluted at 4°C.

## Applications:

**Applications:** WB-*Quality tested*  
ICFC - *Reported in the literature*

**Recommended Usage:** Each lot of this antibody is quality control tested by Western blotting. Western blotting, suggested working dilution(s): Use 0.5-1  $\mu$ g per ml antibody dilution buffer. It is recommended that the reagent be titrated for optimal performance for each application.

**Application References:** 1. Zhang Z, *et al.* 2007. *Blood* 109:4328. (Block)  
2. Gorman CL, *et al.* 2008. *J. Immunol.* 180:1060.  
3. Jenson WA, *et al.* 1997. *Eur J. Immunol.* 27:707.  
4. Mao H, *et al.* 2010. *J. Virol.* 84:4148. PubMed  
5. Hwang I, *et al.* 2012. *Int Immunol.* 24:793. PubMed. *This product is for in vitro research use only. It is not to be used for commercial purposes. Use of this product to produce products for sale or for diagnostic therapeutic or drug discovery purposes is prohibited. In order to obtain a license to use this product for commercial purposes contact The Regents of the University of California.*



Jurkat (1) and Raji (2) cell extracts were resolved by electrophoresis, transferred to nitrocellulose and probed with purified anti-CD247 (TCR zeta, CD3 zeta) antibody. Proteins were visualized using a goat anti-mouse secondary conjugated to HRP and a chemiluminescence detection system.

**Description:** The invariant TCR zeta chain is a member of the CD3 complex associated with the clonotypic alpha/beta TCR heterodimer. The disulfide-linked TCRzeta homodimers transmit signals following TCR ligation. Loss of TCR zeta expression has been reported in a diverse range of disease states, including autoimmune diseases, many neoplastic conditions and chronic infections, such as tuberculosis and leprosy.

**Antigen References:** 1. Weissman A, *et al.* 1988. *P. Natl. Acad. Sci. USA* 85:9709

### Related Products:

**Product**  
Purified Mouse IgG1,  $\kappa$  Isotype Ctrl  
Cell Staining Buffer  
RBC Lysis Buffer (10X)

**Clone**  
MOPC-21

### Application

FC, ICFC, ICC, IF, IHC, IP, WB  
FC, ICC, ICFC  
FC, ICFC



For research use only. Not for diagnostic use. Not for resale. BioLegend will not be held responsible for patent infringement or other violations that may occur with the use of our products.



\*These products may be covered by one or more Limited Use Label Licenses (see the BioLegend Catalog or our website, [www.biollegend.com/ordering#license](http://www.biollegend.com/ordering#license)). BioLegend products may not be transferred to third parties, resold, modified for resale, or used to manufacture commercial products, reverse engineer functionally similar materials, or to provide a service to third parties without written approval of BioLegend. By use of these products you accept the terms and conditions of all applicable Limited Use Label Licenses. Unless otherwise indicated, these products are for research use only and are not intended for human or animal diagnostic, therapeutic or commercial use.