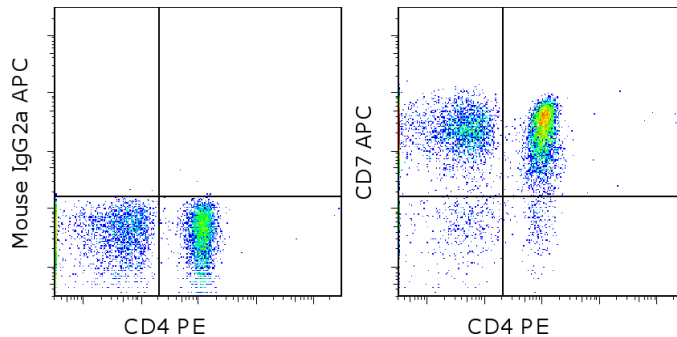


## Anti-Human CD7 APC

**Catalog Number:** 17-0078

**Also known as:** Leu-9

**RUO: For Research Use Only. Not for use in diagnostic procedures.**



Staining of normal human peripheral blood cells with Anti-Human CD4 PE (cat. 12-0048) and Mouse IgG2a kappa Isotype Control APC (cat. 17-4724) (left) or Anti-Human CD7 APC (right). Cells in the lymphocyte gate were used for analysis.

### Product Information



**Contents:** Anti-Human CD7 APC  
**Catalog Number:** 17-0078  
**Clone:** 4H9  
**Concentration:** 5 uL (0.25 ug)/test  
**Host/Isotype:** Mouse IgG2a, kappa



**Formulation:** aqueous buffer, 0.09% sodium azide, may contain carrier protein/stabilizer  
**Temperature Limitation:** Store at 2-8°C. Do not freeze. Light sensitive material.



**Batch Code:** Refer to vial



**Use By:** Refer to vial

### Description

This 4H9 monoclonal antibody reacts with human CD7 (also known as Leu-9 or gp40), a 40-kDa transmembrane glycoprotein belonging to the immunoglobulin superfamily. This molecule is expressed on peripheral blood T lymphocytes and natural killer cells, as well as on lymphoid and myeloid lineage precursors during adult hematopoiesis. Capable of providing a costimulatory signal and associating with CD3 and CD45, CD7 is involved in T cell activation.

CD7 has also been detected on numerous T cell-derived leukemias and lymphomas. In fact, because CD7 expression is greater on CD4+ T cells in classical Hodgkin's lymphoma than in benign reactive lymphadenopathy, this molecule may be used as a diagnostic for Hodgkin's lymphoma.

Blocking assays demonstrate that this clone recognizes the same epitope as clone 124-1D1.

### Applications Reported

This 4H9 antibody has been reported for use in flow cytometric analysis.

### Applications Tested

This 4H9 antibody has been pre-titrated and tested by flow cytometric analysis on normal human peripheral blood cells. This can be used at 5 µl (0.25 µg) per test. A test is defined as the amount (µg) of antibody that will stain a cell sample in a final volume of 100 µl. Cell number should be determined empirically but can range from 10<sup>5</sup> to 10<sup>8</sup> cells/test.

### References

Seegmiller AC, Karandikar NJ, Kroft SH, McKenna RW, Xu Y. Overexpression of CD7 in classical Hodgkin lymphoma-infiltrating T lymphocytes. *Cytometry B Clin Cytom.* 2008 Oct 27. (Pubmed)

Weiss LM, Crabtree GS, Rouse RV, Warnke RA. Morphologic and immunologic characterization of 50 peripheral T-cell lymphomas. *Am J Pathol.* 1985 Feb;118(2): 316-24.

Not for further distribution without written consent.

Copyright © 2000-2012 eBioscience, Inc.

Tel: 888.999.1371 or 858.642.2058 • Fax: 858.642.2046 • [www.ebioscience.com](http://www.ebioscience.com) •  
[info@ebioscience.com](mailto:info@ebioscience.com)

---

## Anti-Human CD7 APC

**Catalog Number:** 17-0078

**Also known as:** Leu-9

**RUO: For Research Use Only. Not for use in diagnostic procedures.**

---

Link M, Warnke R, Finlay J, Amylon M, Miller R, Dilley J, Levy R. A single monoclonal antibody identifies T-cell lineage of childhood lymphoid malignancies. *Blood*. 1983 Oct;62(4): 722-8. (4H9, FC, Pubmed)

### Related Products

12-0048 Anti-Human CD4 PE (OKT4 (OKT-4))

17-4724 Mouse IgG2a K Isotype Control APC

---

Not for further distribution without written consent.

Copyright © 2000-2012 eBioscience, Inc.

Tel: 888.999.1371 or 858.642.2058 • Fax: 858.642.2046 • [www.ebioscience.com](http://www.ebioscience.com) •  
[info@ebioscience.com](mailto:info@ebioscience.com)