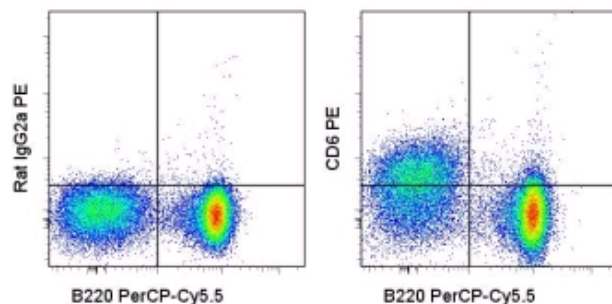


Anti-Mouse CD6 PE

Catalog Number: 12-0061

RUO: For Research Use Only



Staining of BALB/c splenocytes with Anti-Human/Mouse CD45R (B220) PerCP-Cy5.5 (cat. 45-0452) and 0.125 µg of Rat IgG2a κ Isotype Control PE (cat. 12-4321) (left) or 0.125 µg of Anti-Mouse CD6 PE (right). Total viable cells were used for analysis.

Product Information

Contents: Anti-Mouse CD6 PE


REF Catalog Number: 12-0061

Clone: IM348


Concentration: 0.2 mg/ml


Host/Isotype: Rat IgG2a

Formulation: aqueous buffer, 0.09% sodium azide, may contain carrier protein/stabilizer

 Temperature Limitation: Store at 2-8°C. Do not freeze. Light sensitive material.

LOT Batch Code: Refer to Vial

 Use By: Refer to Vial

 Caution, contains Azide

Description

The monoclonal antibody IM348 recognizes mouse CD6, a transmembrane glycoprotein of the scavenger receptor family. The extracellular domain contains three scavenger receptor cysteine rich (SRCR) domains, a transmembrane region and a cytoplasmic domain of variable length depending on the isoform. CD6 is expressed on most T lymphocytes. Expression between human and mouse is slightly different. In mice B cells in the spleen do not have CD6, while humans express it on a subset of B lymphocytes. The CD6 ligand is CD166, also known as Activated Leukocyte Cell Adhesion Molecule (ALCAM). Through interactions with CD166 or homotypic CD6-CD6, a role exists in adhesion and migration during organogenesis. The intracellular domain of CD6 is constitutively phosphorylated, suggesting a role in T cell activation and signaling. In humans depletion of CD6-expressing cells increases graft versus host tolerance in transplants.

Applications Reported

This IM348 antibody has been reported for use in flow cytometric analysis.

Applications Tested

This IM348 antibody has been tested by flow cytometric analysis of mouse splenocytes. This can be used at less than or equal to 0.25 µg per test. A test is defined as the amount (µg) of antibody that will stain a cell sample in a final volume of 100 µL. Cell number should be determined empirically but can range from 10⁵ to 10⁸ cells/test. It is recommended that the antibody be carefully titrated for optimal performance in the assay of interest.

References

Singer NG, Fox DA, Haqqi TM, Beretta L, Endres JS, Prohaska S, Parnes JR, Bromberg J, Sramkoski RM. CD6: expression during development, apoptosis and selection of human and mouse thymocytes. *Int Immunol.* 2002 Jun;14(6):585-97.

Bowen MA, Bajorath J, D'Egidio M, Whitney GS, Palmer D, Kobarg J, Starling GC, Siadak AW, Aruffo A. Characterization of mouse ALCAM (CD166): the CD6-binding domain is conserved in different homologs and mediates cross-species binding. *Eur J Immunol.* 1997 Jun;27(6):1469-78.

Pal A, Romain PL, Singer NG, Fox D, Stavnezer J. Mouse CD6: sequence of cDNA and expression of mRNA. *Immunol Lett.* 1996 Jan;49(1-2):133-7.

Related Products

12-4321 Rat IgG2a K Isotype Control PE

95-0452 Anti-Human/Mouse CD45R (B220) eFluor[®] 650NC (RA3-6B2)

Not for further distribution without written consent.

Copyright © 2000-2010 eBioscience, Inc.

Tel: 888.999.1371 or 858.642.2058 • Fax: 858.642.2046 • www.eBioscience.com • info@eBioscience.com