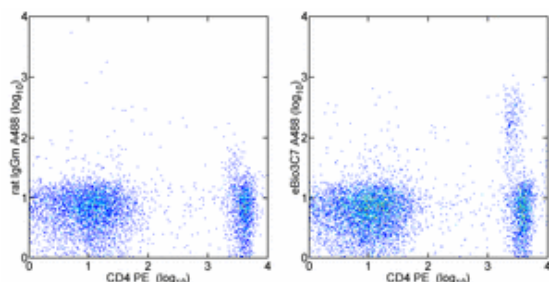


## Anti-Mouse CD25 Alexa Fluor® 488

Catalog Number: 53-0253

Also Known As: Interleukin-2 Receptor alpha, IL-2Ra, IL2Ra

RUO: For Research Use Only



Staining of BALB/c splenocytes with Anti-Mouse CD4 PE (cat. 12-0042) and 0.06 µg of Rat IgG2b κ Isotype Control Alexa Fluor® 488 (cat. 53-4031) (left) or 0.06 µg of Anti-Mouse CD25 Alexa Fluor® 488 (right). Cells in the lymphocyte gate were used for analysis.

### Product Information

Contents: Anti-Mouse CD25 Alexa Fluor® 488

**REF** Catalog Number: 53-0253

Clone: eBio3C7 (3C7)

Concentration: 0.5 mg/ml

Host/Isotype: Rat IgG2b, κ

Formulation: aqueous buffer, 0.09% sodium azide, may contain carrier protein/stabilizer



Temperature Limitation: Store at 2-8°C. Do not freeze. Light sensitive material.



Batch Code: Refer to Vial



Use By: Refer to Vial



Caution, contains Azide

### Description

The eBio3C7 antibody reacts with mouse CD25, the 55 kDa interleukin-2 receptor α chain (IL-2Ra). CD25 is expressed by early progenitors of the T and B lineage as well as by activated mature T and B lymphocytes. By itself, CD25 binds IL-2 only with low affinity. However, CD25 associates with CD122 (IL-2 receptor β chain) and CD132 (common γ chain) to form the high affinity IL-2 receptor. Binding of IL-2 to both the high and low affinity classes of the IL-2 receptor is inhibited by the 3C7 antibody. CD25 plays a role in lymphocyte differentiation and activation/proliferation. The epitopes recognized by eBio3C7, PC61.5 and eBio7D4 are all different allowing for depletion with one antibody (typically PC61.5) and subsequent detection with another CD25 antibody.

### Applications Reported

This eBio3C7 (3C7) antibody has been reported for use in flow cytometric analysis.

### Applications Tested

This eBio3C7 (3C7) antibody has been tested by flow cytometric analysis of mouse splenocytes. This can be used at less than or equal to 0.06 µg per test. A test is defined as the amount (µg) of antibody that will stain a cell sample in a final volume of 100 µL. Cell number should be determined empirically but can range from 10<sup>5</sup> to 10<sup>8</sup> cells/test. It is recommended that the antibody be carefully titrated for optimal performance in the assay of interest.

### References

Klug DB, Carter C, Crouch E, Roop D, Conti CJ, Richie ER. Interdependence of cortical thymic epithelial cell differentiation and T-lineage commitment. *Proc Natl Acad Sci U S A*. 1998 Sep 29;95(20):11822-7. (eBio3C7, IH/F, PubMed)

Ortega G, Robb RJ, Shevach EM, Malek TR. The murine IL 2 receptor. I. Monoclonal antibodies that define distinct functional epitopes on activated T cells and react with activated B cells. *J Immunol*. 1984 Oct;133(4):1970-5.

### Related Products

53-0251 Anti-Mouse CD25 Alexa Fluor® 488 (PC61.5)

53-0252 Anti-Mouse CD25 Alexa Fluor® 488 (eBio7D4 (7D4))

53-0259 Anti-Human CD25 Alexa Fluor® 488 (BC96)

53-4031 Rat IgG2b K Isotype Control Alexa Fluor® 488

### Legal

Alexa Fluor® and Pacific Blue® are registered trademarks of and licensed under patents assigned to Molecular Probes, Inc. for research use only. This product is subject to an agreement between Molecular Probes, Inc. and eBioscience, and the manufacture, use, sale or import of this product may be subject to one or more U.S. patents, pending applications and corresponding foreign equivalents, owned by Molecular Probes, Inc. (a wholly owned subsidiary of Invitrogen Corp). The purchase of this product conveys to the buyer the non-transferable right to use the purchased amount of the product for life science research or as an ASR. The buyer cannot use this product for manufacturing or for any other screening

---

Not for further distribution without written consent.

Copyright © 2000-2010 eBioscience, Inc.

Tel: 888.999.1371 or 858.642.2058 • Fax: 858.642.2046 • [www.eBioscience.com](http://www.eBioscience.com) • [info@eBioscience.com](mailto:info@eBioscience.com)