

PCR DNA Markers

<u>Code</u>	<u>Description</u>	<u>Size</u>
E854 – 100RXN	PCR DNA Marker™ <i>8 fragments from 50-2000bp</i>	100 Lanes
K811 – 50RXN	PCR DNA Marker™ with Loading Dye <i>8 fragments from 50-2000bp</i>	50 Lanes
J130 – 50RXN	PCR DNA Marker PLUS™ <i>16 fragments from 50-2000bp</i>	50 Lanes
N853 - 500UL	EZ-Vision™ PCR DNA Marker <i>8 fragments from 500-2000bp</i>	50 Lanes

General Information:

AMRESKO PCR Markers provide superior band resolution for estimation of DNA fragment sizes between 50 and 2000 base pairs. PCR markers offer batch to batch consistency for reproducible results for agarose gel electrophoresis. High intensity bands, provided for visual references, are ideal for quick sizing of PCR products and restriction digests.

PCR markers are available in 4 formulations:

- **Original (E854-100RXN):** Includes 8 fragments from 50-2000 bp. DNA fragments are genetically engineered to provide discrete bands suitable for size determination and reproducible quantitation.
- **Ready-to-use (K811-50RXN):** Identical to the original formulation (E854-100RXN) but provided in loading buffer for maximum convenience.
- **Expanded range (J130-50RXN):** Includes 16 fragments ranging from 50-2000 bp.
- **EZ-Vision™ Marker (N853-500ul):** PCR Marker with EZ-Vision™ One for Fluorescent DNA plus loading buffer.

PCR Marker mobility depends on the percentage of agarose in the gel. They are compatible with all common running buffers including Tris-Borate-EDTA (TBE) and Tris-Acetate-EDTA (TAE) as well as most staining procedures.

Storage/Stability:

Store at 0 to -26°C

Application Disclaimer

*For Research Use Only.
Not for Therapeutic or Diagnostic Use.*

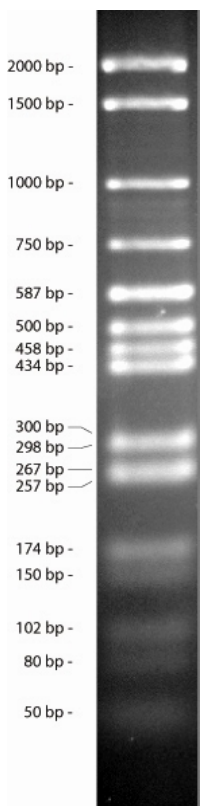


Procedure:

- **PCR DNA Marker™ (E854-100RXN):** Mix 10 µl markers with required quantity of loading buffer and apply to gel. Run according to standard procedures.
- **PCR DNA Marker™ with Loading Dye (K811-50RXN):** Simply load 10 µl of markers onto gel lane and run gel according to standard procedure.
- **PCR DNA Marker PLUS™ (J130-50RXN):** Mix 5-10 µl markers with required quantity of loading buffer and apply to gel. Run according to standard procedures.
- **EZ-Vision™ PCR DNA Marker (N853-500ul):** Simply load 10 µl of markers onto gel lane and run gel according to standard procedure.

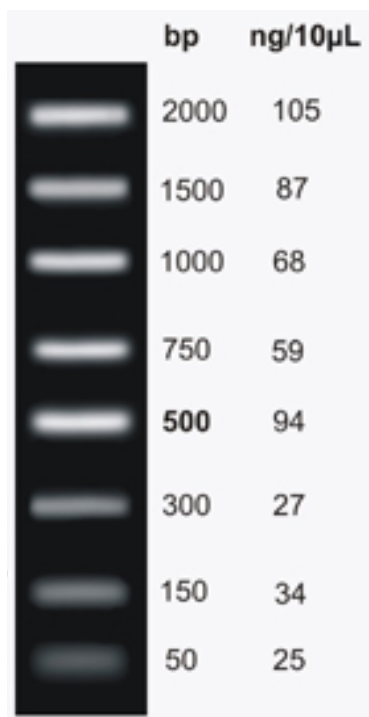
Related Products

<u>Code</u>	<u>Product</u>
0710	Agarose I
N472	EZ-Vision™ One
N650	EZ-Vision™ Two
N313	EZ-Vision™ Three
0796	TAE, 25X Liquid Concentrate
0658	TBE, 10X Liquid Concentrate



PCR DNA Marker PLUS™ (J130-50RXN).

10 uL PCR DNA Plus™ Marker were mixed with 3.3 ul 4X gel loading buffer and applied to a 2.5% Agarose I TAE gel. The gel was run for 90 min. at 70 V and post stained with 0.5 ug/mL EtBr for 15 min.



PCR DNA Marker™ (E854-100RXN) & PCR DNA Marker™ with Loading Dye (K811-50RXN) & EZ-Vision™ PCR DNA Marker (N853-500ul).

10 µl markers were resolved on 0.8 cm x 13 cm x 15 cm 2% agarose/TAE gel and stained with 0.5 µg/ml Ethidium bromide.



ZY0496 10/25/10 Rev 1 ©Copyright 2009 by AMRESCO Inc. All Rights Reserved. AMRESCO® is a registered trademark of AMRESCO Inc.

**Corporate Headquarters**

AMRESCO Inc.
30175 Solon Industrial Pkwy.
Solon, OH 44139 USA
Tel: (440) 349-1199
Toll free: 1-800-448-4442 (US & Canada)
Fax: (440) 349-2441
e-mail: info@amresco-inc.com

To Order (USA & Canada)

Toll free: 1-800-448-4442
Toll free fax: 1-800-326-3733
Fax: (440) 349-3255
e-mail: dom-sales@amresco-inc.com

International Orders:

Tel: (440) 349-1199
Fax: (440) 349-2441
e-mail: int-sales@amresco-inc.com

Technical Support

Toll free: 1-800-610-2789 (USA & Canada)
Fax: (440) 349-0235
e-mail: techinquiry@amresco-inc.com

www.amresco-inc.com

